



# MONTHLY MEMBERSHIP PROGRESS REPORT

District 5M 9

Results as of: 3/31/2017

GMT: Judy Hankom

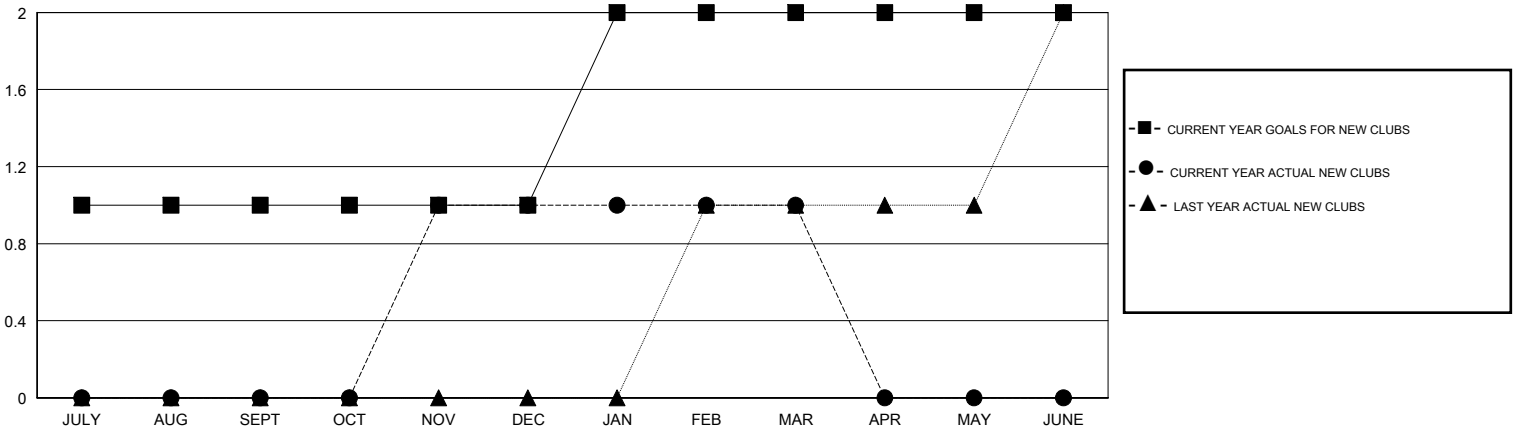
LOCATION MINNESOTA

GMT CA

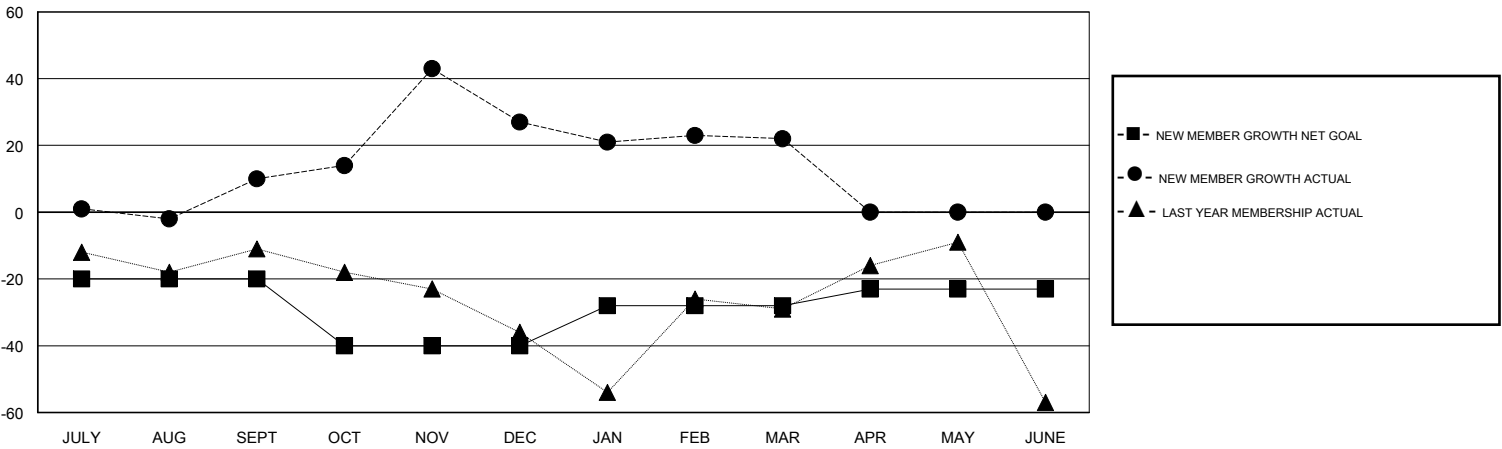
Clubs			
RESULTS FOR 2016-2017			
QUARTER	NEW CLUB GOAL	NEW CLUBS	DROPPED CLUBS
JULY/AUG/SEPT	1	0	0
OCT/NOV/DEC	0	1	0
JAN/FEB/MAR	1	0	0
APR/MAY/JUNE	0	0	0

Members			
RESULTS FOR 2016-2017			
QUARTER	NEW MEMBER GROWTH NET GOAL (not reinstated or transfers)	NEW MEMBER GROWTH ACTUAL (not reinstated or transfers)	DROPPED MEMBERS ACTUAL (including transfers)
JULY/AUG/SEPT	-20	46	36
OCT/NOV/DEC	-20	61	44
JAN/FEB/MAR	12	36	41
APR/MAY/JUNE	5	0	0

GOALS AND ACTUAL NEW CLUBS CUMULATIVE



GOALS AND ACTUAL MEMBERS CUMULATIVE



DROPPED CLUBS: 0	43 CLUBS OF 67 ADDED 1 OR MORE NEW MEMBERS	<u>GENDER DISTRIBUTION</u>	
DROPPED MEMBERS		MALE	1,480 (63.99%)
DECEASED	20	FEMALE	833 (36.01%)
CLUB CANCELLED	0	TOTAL FAMILY UNIT MEMBERS	769
OTHER	101	FAMILY MEMBERS PAYING HALF DUES	387
TOTAL	121		

[CLICK HERE FOR CUMULATIVE MEMBERSHIP DATA](#)